



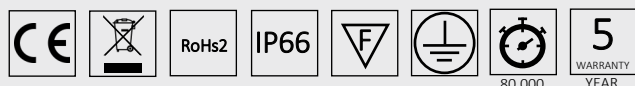
## VANYA 80 R4

Model	Code	Colour	CCT	Lumen
VANYA-80-R4-C-1	LHT 000041	White	5700 k	8950
VANYA-80-R4-N-2	LHT 000051	Natural White	4000 k	8950

## Features

Power	80 W	
Supply voltage	90 - 304 Vac 50/60 Hz	
IP Class	IP66	
Light source	36 LED by Nichia	
Temperatura colore LED	C = 5700k	N = 4000k
CRI	1 = CRI 75	2 = CRI 83
Optics	Symmetric 90°	
Ambient temperature range (TA)	-40 C° +60 C°	
Storage temperature range	-40 C° +70 C°	
Storage humidity range	0-95% Rh	
Photobiological risk group	EN 62471: 2008	Exempt group
IEC protection class	Class 1	
Dimension	335x335x77,2 mm	
Weight	4,5 kg	
Median useful life at L70	80.000h	
Surface treatment, color	Cataphoresis, White	
Warranty	5 Year *	

\* See terms and conditions



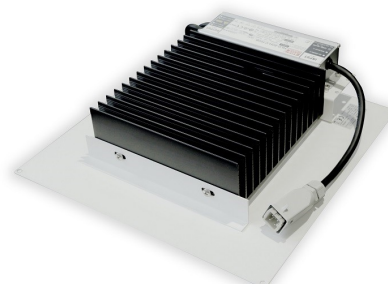
**VANYA 80 R4 RETROFIT** to renew and make more efficient the lighting system of a service station with a minimum use of execution time and consequent economic savings, Vanya 80 R4 adapts easily to the existing frame of the **mini 300 lamp**, also making it an excellent solution to illuminate a service station in a safe and comfortable way, the right power and the optical specifications to focus the light beam at 90 ° allow adequate and homogeneous lighting, the positioning of the rearward LEDs constitutes a shielding which in addition to the parabolas made of the metal of the part the front of the frame minimizes glare, the painting of the frame with cataphoresis anti-corrosion treatment and the integrated surge protection device (Surge) make the product a lasting good, drastically reducing maintenance costs.

## Applications

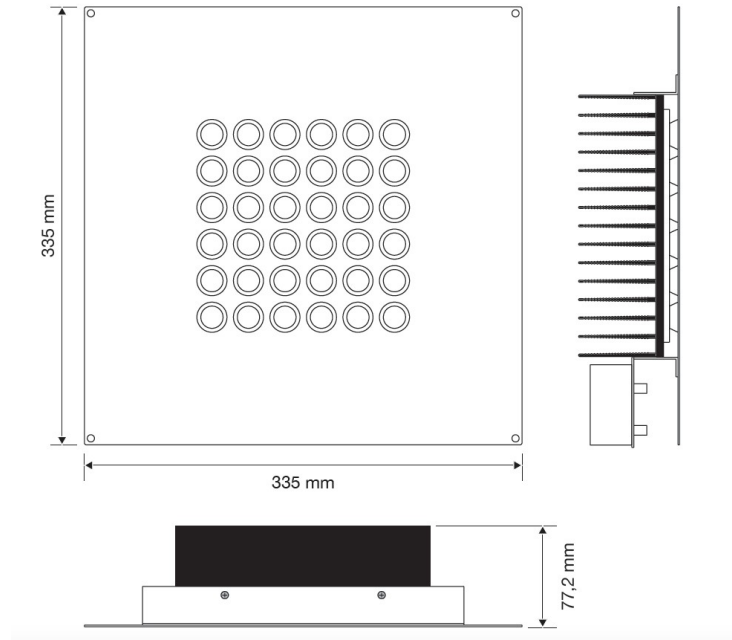
- Petrol stations

## Benefits

- Recessed Luminaire
- High efficiency LED with low luminous decay.
- Modern and compact metal structure
- Anti-corrosion cataphoresis treatment
- Quick and safety installation with frame and brackets
- Surges protection
- Anti-glare reflectors
- Symmetric optics

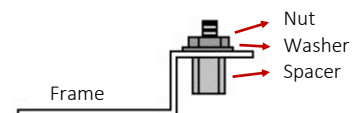
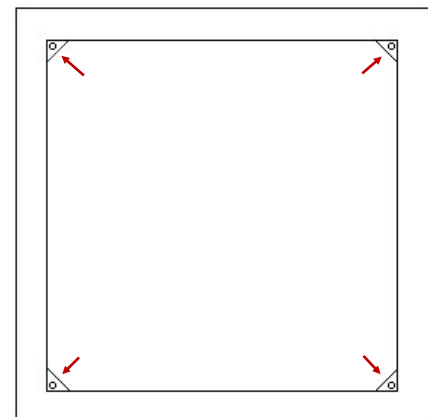
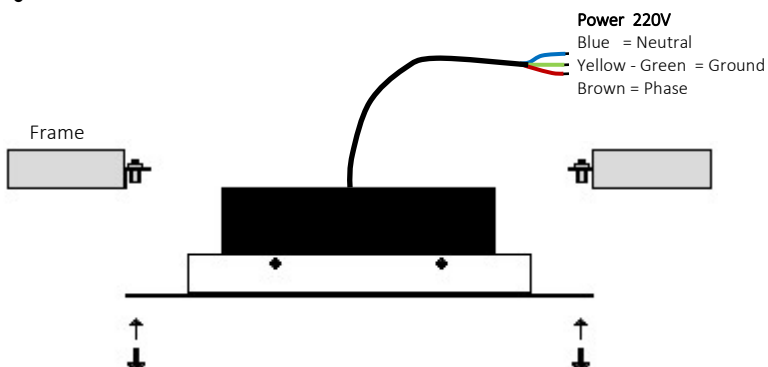


### Dimension



### Mounting

- Remove the central block of the old lam, only leaving the frame.
- Fit the 4 spacers with relative washers and nuts supplied on the existing frame.
- Connect the cable to the line 220vac.
- Fasten Vanya 80 R4 to the existing frame, resting it on the spacers using the 4 screws provided.
- **CAUTION !!!** The operation must be performed by qualified and competent personnel.
- 



### Disclaimer

Data sheet subject to change without notice. Errors and omission excepted. Always make sure to use the most recent release.