



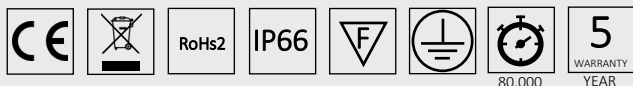
## VANYA 80 R2

Model	Code	Colour	CCT	Lumen
VANYA-80-R2-C-1	LHT 000035	White	5700 k	8950
VANYA-80-R2-N-2	LHT 000052	Natural White	4000 k	8950

## Features

Power	80 W
Supply voltage	90 - 304 Vac 50/60 Hz
IP Class	IP66
Light source	36 LED by Nichia
Temperatura colore LED	C = 5700k N = 4000k
CRI	1 = CRI 75 2 = CRI 83
Optics	Symmetric90°
Ambient temperature range (TA)	-40 C° +60 C°
Storage temperature range	-40 C° +70 C°
Storage humidity range	0-95% Rh
Photobiological risk group EN 62471: 2008	Exempt group
IEC protection class	Class 1
Dimension	380x380x78 mm
Weight	6,3 kg
Median useful life at L70	80.000h
Surface treatment, color	Cataphoresis, White
Warranty	5 Year *

\* See terms and conditions



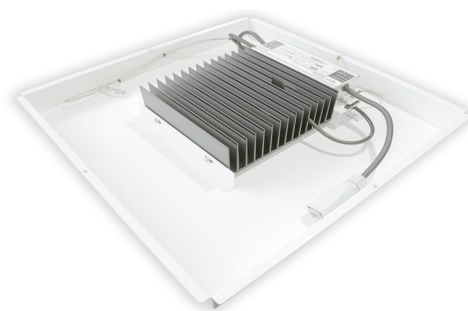
**VANYA 80 R2 RETROFIT** to renew and make more efficient the lighting system of a service station with a minimum use of execution time and consequent economic savings, Vanya 80 R3 adapts easily to the existing frame of the **SNP2 250W and 1N 250W** lamps, also making it an excellent solution to illuminate a service station in a safe and comfortable way, the right power and the optical specifications to focus the light beam at 90° allow adequate and homogeneous lighting, the positioning of the rearward LEDs constitutes a shielding which in addition to the parabolas made of the metal of the part the front of the frame minimizes glare, the painting of the frame with cataphoresis anti-corrosion treatment and the integrated surge protection device (Surge) make the product a lasting good, drastically reducing maintenance costs.

## Applications

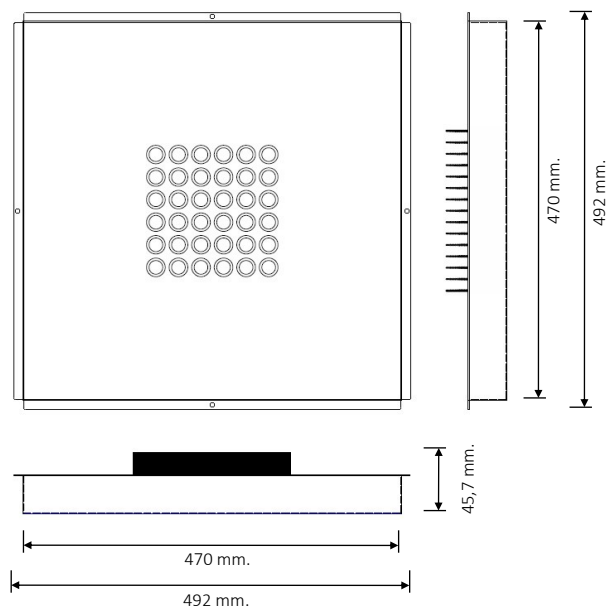
- Petrol stations

## Benefits

- Recessed Luminaire
- High efficiency LED with low luminous decay.
- Modern and compact metal structure
- Anti-corrosion cataphoresis treatment
- Quick and safety installation with frame and brackets
- Surges protection
- Anti-glare reflectors
- Symmetric optics

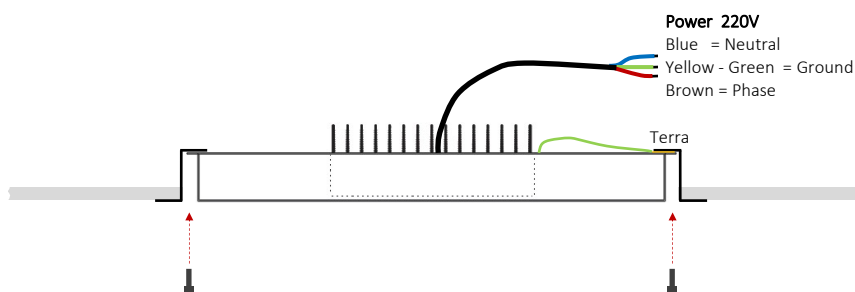


### Dimension



### Mounting

- Remove the central block of the old lamp leaving the frame.
- Hook the safety carabiner on the ceiling light to the structure of the canopy
- Connect the cable to the line 220vac.
- Fasten the ceiling light to the existing frame, leaving the safety carabiner hooked.
- The yellow-green earth wire with ring cable lug present in the ceiling light must be placed between the ceiling light and the frame on one of the 4 fixing screws and the serrated washers must be inserted to ensure consistent contact.
- **CAUTION !!!** The operation must be performed by qualified and competent personnel.



### Disclaimer

Data sheet subject to change without notice. Errors and omission excepted. Always make sure to use the most recent release.