



HS9-SV is a side view flexible LED strip, very thin and suitable for lighting application and luminous decoration.

This product is available with 2 different IP levels protection: Naked IP30, and silicone extrusion IP67.

The product is very robust and reliable moreover it is subdivisible. The IP67 version can be ended by special opal caps that become luminous avoiding light interruptions.

Applications

- Linear lighting
- Architectural application
- Decorative luminous application
- Signage application

Benefits

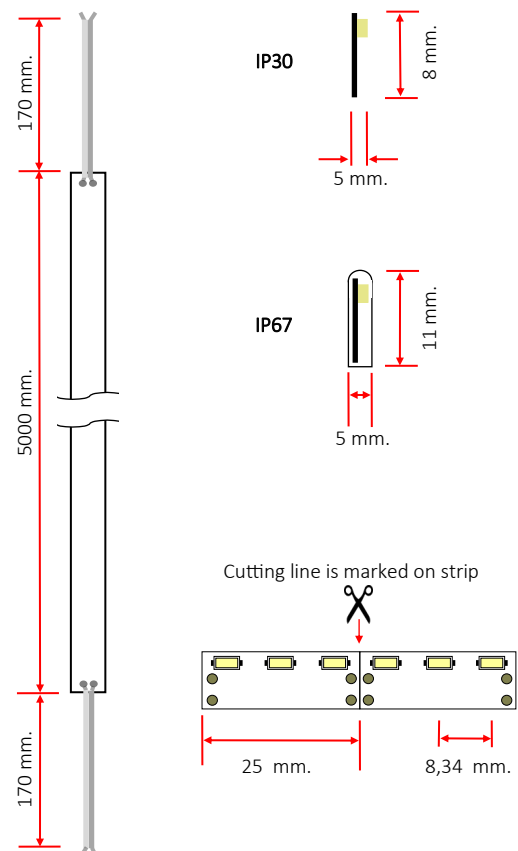
- Linear side view lighting, homogeneous brightness
- Excellent luminous efficiency
- Flexible silicone structure (IP 67 version)
- Opal silicone caps that spread the light (IP 67 version)
- Long life
- High quality 3M 300LSE adhesive
- Anti-yellowing silicone (IP 67 version)

Model	Color	CCT	Luminous Flux
HS9N-SV-120W12	White	6000-6500 k	960 Lm/m
HS9N-SV-120NW12	Natural White	4000-4500 k	950 Lm/m
HS9N-SV-120WW12	Warm White	2700-3200 k	940 Lm/m
HS9E-SV-120W12	White	6000-6500 k	960 Lm/m
HS9E-SV-120NW12	Natural White	4000-4500 k	950 Lm/m
HS9E-SV-120WW12	Warm White	2700-3200 k	940 Lm/m

Generic Features

Nominal Voltage	DC 12V
Nominal Power	9,6W/m.
Length	5.000 mm.
LED quantity	120 LED/m.
LED Pitch	8,34 mm.
LED tube subdivision	25 mm. (3 LEDs)
IP Class	See Model
Operating Temperature Range	-30 C° ~ +50 C°
Storage Temperature Range	-0 C° ~ +40 C°
Storage Environment Humidity	RH < 60%
Cable length (20AWG)	170 mm.
Viewing Angle	120°
Life Time (temperature at T _c = 75 °C)	50.000h (L70)
Consistent white light	< 3 SDCM
N. LED Profile per pack	1
Warranty	2 Years *

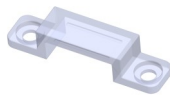
*See terms and conditions



Codifica e informazioni tecniche

Model	Code	Color Rendering Index	IP Class	Voltage Range	Accidental reverse input voltage protection up to:
HS9N-SV-120W12	HTL 000365	> 80	IP30	11,5...12,5 VDC	12,5 VDC
HS9N-SV-120NW12	HTL 000412	> 80	IP30	11,5...12,5 VDC	12,5 VDC
HS9N-SV-120WW12	HTL 000367	> 80	IP30	11,5...12,5 VDC	12,5 VDC
HS9E-SV-120W12	HTL 000349	> 80	IP67	11,5...12,5 VDC	12,5 VDC
HS9E-SV-120NW12	HTL 000366	> 80	IP67	11,5...12,5 VDC	12,5 VDC
HS9E-SV-120WW12	HTL 000368	> 80	IP67	11,5...12,5 VDC	12,5 VDC

Accessories



Fixing clip



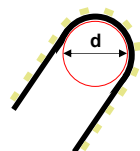
Cap

Model	Code	Description
CAP WIRES	HTL 000476	Cap in silicone with holes for wires
END CAP	HTL 000475	End cap
HT	HTL 000070	Fixing clip (IP 67 version)
HT	HTL 000497	Silicone Gel
HT	HTL 000512	Primer for silicone Gel

Side emission of the luminous flux



Bending $d = 30$ mm.



NOTE:

1. This product cannot be installed in direct exposure to sunlight.
2. The IP 67 protection level is guaranteed only on the uncut product, but as a factory original.
3. Do not cover the LEDs with any type of conformal coating products in order not to contaminate the phosphors and therefore not to affect the life of the product.

The product comply with the following European Standard

<input checked="" type="checkbox"/>	EN 62471: 2008	Photobiological safety of lamps and lamp systems
<input checked="" type="checkbox"/>	EN 62031: 2008+A1: 2013	LED modules for general lighting, Safety specifications
<input checked="" type="checkbox"/>	RoHS2 2011/65/UE	Restriction in the use of hazardous substances in electrical and electronic equipment