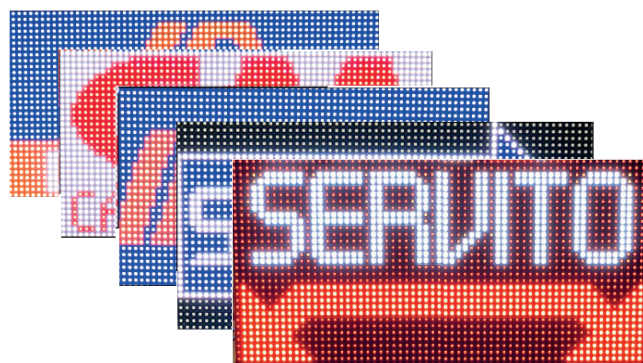
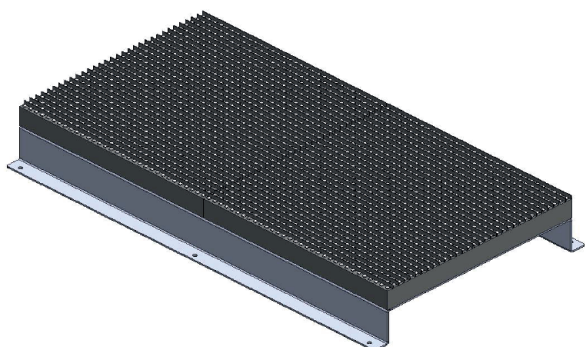



IMAGES AND VIDEOS IN 16 MILLION COLORS

Operation synchronized with fuel price LED displays



Technical features

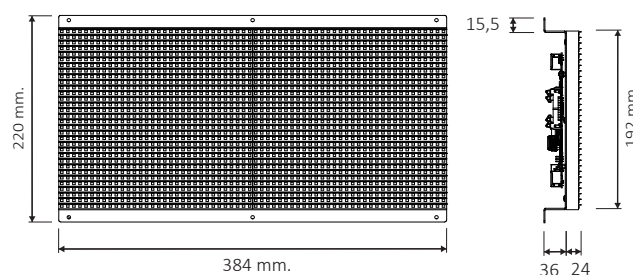
Model	HGMV-64x32-P6 i
Code	G 100 000338
Operating voltage	DC 5 V
Maximum Power Consumption, all LEDs ON	60 W
Graphic resolution	64 x 32 pixel
LED pitch	6 mm.
LED per pixel	1
LED type	RGB
Screen dimension	384 x 220 mm.
Colors	16.000.000
No. of selectable messages	99
Videos and frames	Yes
LED quantity	2048
Viewing angle	120°
Operating Temperature Range	0 C° ~ +60 C°
Storage temperature	+5 C° ~ +40 C°
Storage Environment Humidity	RH < 60%
Life Time (temperature Tc = 75 °C)	80.000h (L70)
Warranty (Download pdf)	 2 Years

Description

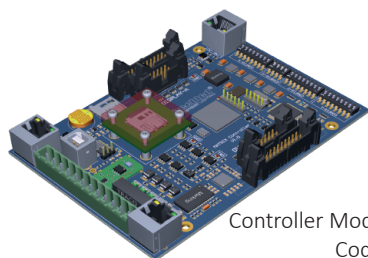
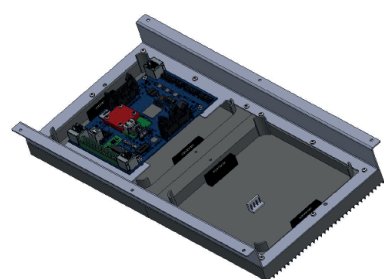
Full color LED panel for service messages, suitable for installation inside the mini totem together with the fuel price LED display. The panel consists of 2 LED modules mounted on an aluminum frame, the controller is installed behind and the LED driver is supplied separately.

Operation in conjunction with the DIS or HDP series fuel price displays, the brightness adjustment is synchronized with that of the price displays.

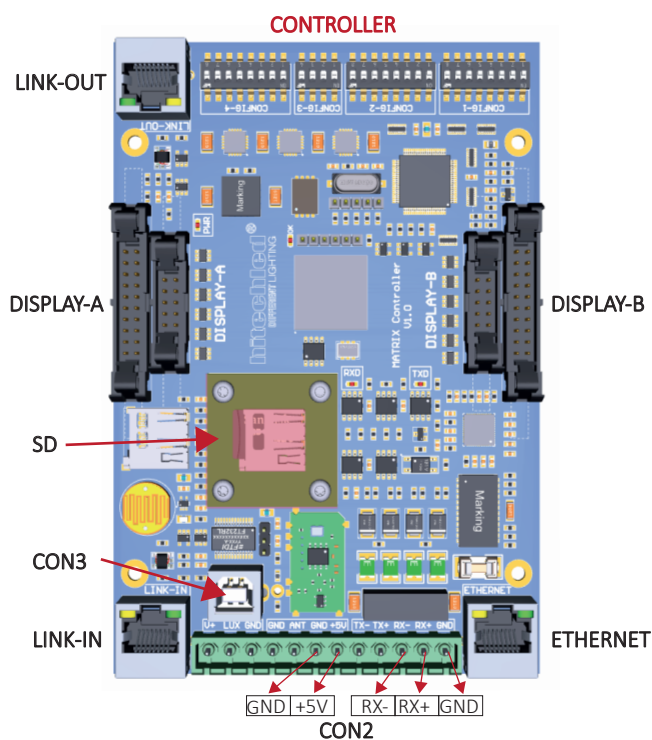
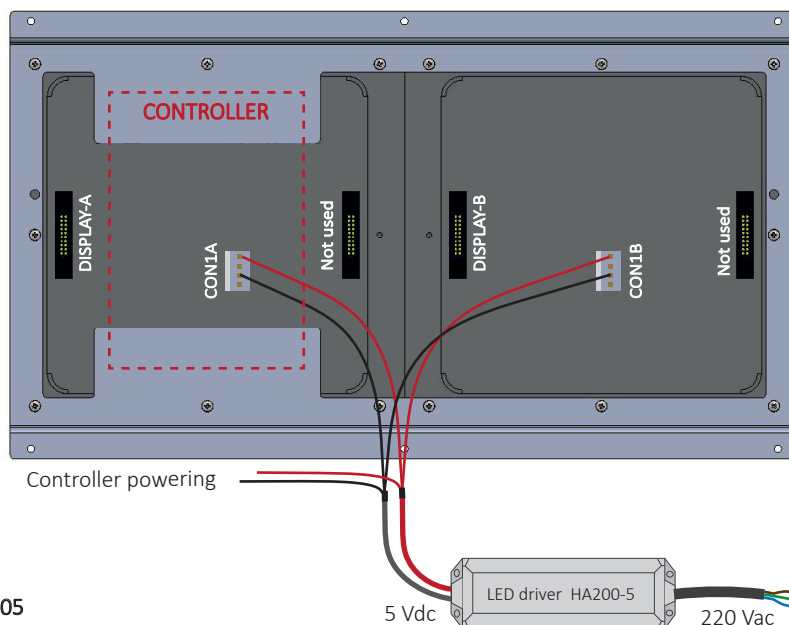
99 programs are available, each program can be combined with a video or a logo content, some logos are already present in the memory, the memory unit is an interchangeable SD Card and It is inserted in the controller, other contents can be customized on request and inserted in empty programs, this service is evaluated separately. The programs can be recalled with the remote control of the RDC fuel LED display or through the connection to the POS.



CONNECTIONS



Controller Mod: **GR16KK-1**
Cod: **G 100 000005**



Connections description

The view of the rear side of the full color panel highlights the connections between the LED modules and the controller, two flat 20-pole cables connect **DISPLAY-A** module-controller and **DISPLAY-B** module-controller.

The 5V output cable of the **HA200-5-HGMV** LED driver includes 2 terminations that are connected to the **CON1A** and **CON1B** connectors of the 2 LED modules and a termination connected to **CON2** for powering the controller.

SD = Inserting the SD memory card.

Description terminal block **CON2** :

GND, +5V = Controller powering

RX-, RX+, GND = RS485 serial port for synchronization with the PCB2 or HDP-BASE price control board (see wiring specifications table).

These connectors are not used:

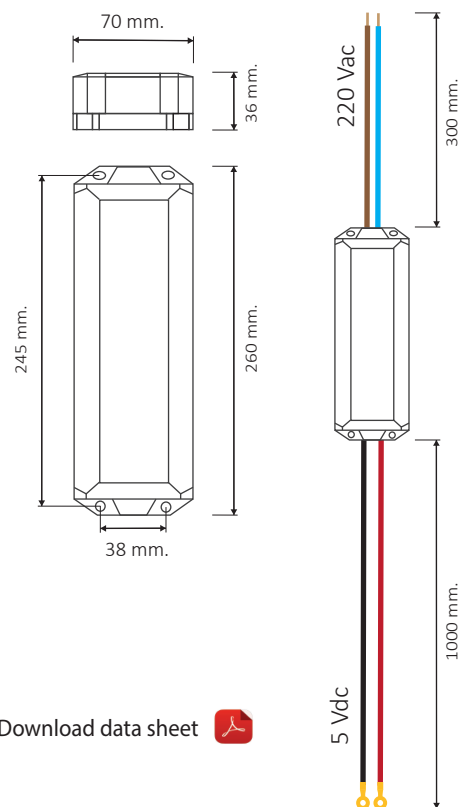
LINK-IN; CON3; LINK-OUT; ETHERNET;

V+, LUX, GND (CON2); ANT (CON2); TX- e TX+ (CON2).

LED DRIVER AND WIRING SPECIFICATIONS

LED driver specification

Model	HA200-5
Code	ALI 000208
Disposability	NOT INCLUDED
INPUT voltage range	175 - 264 Vac
OUTPUT voltage	5 VDC
Power	200 W
PFC @230Vac 80% load	≥0.91
Surge immunity	L-N 4KV L/N-GE6kV
Overload Protection (OLP)	110-120% nominal power
Overtemperature protection (OTP)	115° C; automatic reset
Other protections	Short circuit, Overvoltage
Protection class	IP66/IP67
CE	RMC - EN 55032/22 Class A, LDV - EN 60950
Operating temperature	-30° + 55° C (70°C load 50%)
Dimension	260*70*36mm (LWH)
Input cable	400 mm ; pre-tinned wire termination
Output cable	1000 mm ; eyelet termination



Download data sheet


WARNING !!!

- The two red and black (1000 mm.) output wires **MUST** never be extended.
- Connection to the line must be carried out by qualified personnel, in compliance with current regulations.

Wiring specification table

Codd	Lenght	Disposability	Description
Cod. CAV 000230	72 mm.	INCLUDED	20-pin flat cable for digital signal, connection of DISPLAY-A module to the controller.
Cod. CAV 000231	127 mm.	INCLUDED	20-pin flat cable for digital signal, connection of DISPLAY-B module to the controller.
Cod. CAV 000622	4200 mm.	NOT INCLUDED	Data cable for synchronization with PCB2 or HDP BASE price LED display controllers
Cod. CAV 000738	1000 mm.	NOT INCLUDED	Data cable for synchronization with PCB2 or HDP BASE price LED display controllers
Cod. CAV 000360	1500 mm.	NOT INCLUDED	Data cable for synchronization with PCB2 or HDP BASE price LED display controllers

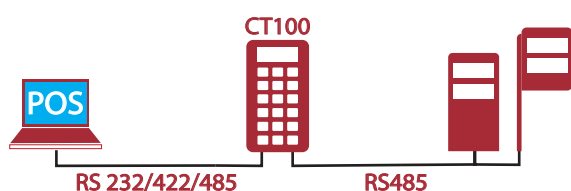
PROGRAMMING



RDC

18-key remote control, radio frequency, range 10-50 m.
Function: Recall of the graphics and messages stored in the SD card.

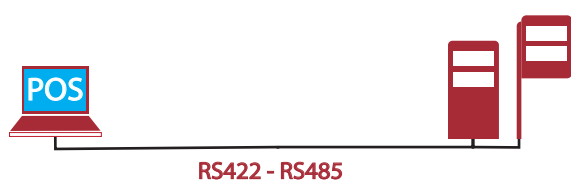
OPERATION ONLY IN COMBINATION WITH FUEL LED DISPLAY CONTROLLERS: PCB2 OR HDP BASE (see HDP series instructions)



CT100

The CT100 LCD keypad through RS422-RS485 serial, Recall of the graphics and messages stored in the SD card.

OPERATION ONLY IN COMBINATION WITH FUEL LED DISPLAY CONTROLLERS: PCB2 OR HDP BASE (see HDP series instructions)



POS via cable

POS management through RS422-RS485 serial
Function: Recall of the graphics and messages stored in the SD card. (Only with communication protocols that provide for it)

OPERATION ONLY IN COMBINATION WITH FUEL LED DISPLAY CONTROLLERS: PCB2 OR HDP BASE (see HDP series instructions)



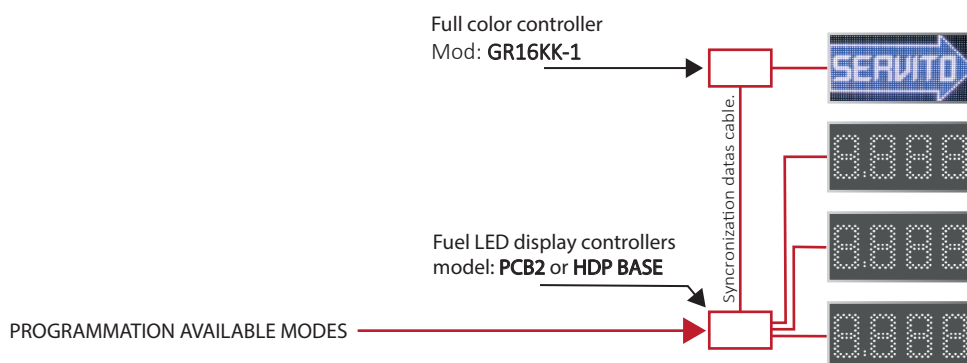
Wireless POS

Radio frequency protocol control unit, range 10-50 m.
Function: Recall of the graphics and messages stored in the SD card. (Only with communication protocols that provide for it)

OPERATION ONLY IN COMBINATION WITH FUEL LED DISPLAY CONTROLLERS: PCB2 OR HDP BASE (see HDP series instructions)

NOTE!

The PROGRAMMING MODES interact only with the PCB2 and HDP BASE controllers of the fuel LED price displays through the synchronization cable (see specific wiring table), send the signal to the full color LED panel for brightness synchronization and display of the selected programs.



Data Sheet

ACCESSORIES



RDC



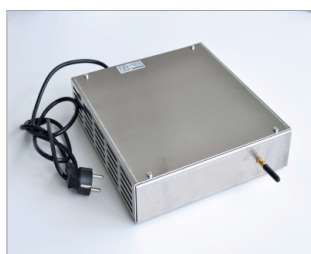
CT100



CONV_SU01



WR868



CUPW868



YAGI868

Code	Model	Description	Function
D 100 001032	RDC	Remote control	Recalls stored messages and displays them on the screen
D 100 002322	CT100	LCD keyboard	Recalls stored messages and displays them on the screen
D 100 002200	CONV_SU01	USB - RS422 converter	Signal converter, from USB to RS422
D 100 002272	WR868	Rx Radiomodem	Radio frequency signal receiver, it works with LED PROG software
D 100 002164	CUPW868	Wireless control unit	Radio frequency signal receiver-transmitter, all protocols are available
D 100 002285	YAGI868	Yagi Antenna	Antenna to increase the range of: WT868, WR868, CUP868

NOTE!

The ACCESSORIES listed can only be connected to the PCB2 or HDP BASE fuel display controller.