



Digital Sign

DiLES Series

hitechled®
DIFFERENT LIGHTING

High definition and
multiple formats
to communicate in
full color way
Cloud programming




MADE IN ITALY



The DiLES series LED screens are stand-alone systems ideal for various applications, such as digital signage; DOOH; petrol station displays with automatic fuel price display and POS connection; display for institutional information Info-City; display for industrial applications, and many others customized applications.



Available Models

CODE	MODEL	DIMENSION	FUNCTION- PITCH	LUMINANCE	RESOLUTION
G 200 000196	HFC-168X336-P2,97CW-M	507x1007x110 mm.	MASTER- P2,97	4500 NIT	168X328 PX
G 200 000197	HFC-168X336-P2,97CW-S	507x1007x110 mm.	SLAVE- P2,97	4500 NIT	168X328 PX
G 200 000132	HFC-128X256-P3,91CW-M	507x1007x110 mm.	MASTER- P3,91	6000 NIT	128X256 PX
G 200 000134	HFC-128X256-P3,91CW-S	507x1007x110 mm.	SLAVE- P3,91	6000 NIT	128X256 PX
G 200 000198	HFC-168X504-P2,97CW-M	507x1507x110 mm.	MASTER- P2,97	4500 NIT	168X504 PX
G 200 000199	HFC-168X504-P2,97CW-S	507x1507x110 mm.	SLAVE- P2,97	4500 NIT	168X504 PX
G 200 000131	HFC-128X384-P3,91CW-M	507x1507x110 mm.	MASTER- P3,91	6000 NIT	128X384 PX
G 200 000133	HFC-128X384-P3,91CW-S	507x1507x110 mm.	SLAVE- P3,91	6000 NIT	128X384 PX
G 200 000232	HFC-504X168-P2,97CW-M	1507x507x110 mm.	MASTER- P2,97	4500 NIT	504X168 PX
G 200 000233	HFC-504X168-P2,97CW-S	1507x507x110 mm.	SLAVE- P2,97	4500 NIT	504X168 PX
G 200 000230	HFC-384X128-P3,91CW-M	1507x507x110 mm.	MASTER- P3,91	6000 NIT	384X128 PX
G 200 000231	HFC-384X128-P3,91CW-S	1507x507x110 mm.	SLAVE- P3,91	6000 NIT	384X128 PX
G 200 000238	HFC-168X672-P2,97CW-M	507x2007x110 mm.	MASTER- P2,97	4500 NIT	168X672 PX
G 200 000239	HFC-168X672-P2,97CW-S	507x2007x110 mm.	SLAVE- P2,97	4500 NIT	168X672 PX
G 200 000240	HFC-128X512-P3,91CW-M	507x2007x110 mm.	MASTER- P3,91	6000 NIT	128X512 PX
G 200 000241	HFC-128X512-P3,91CW-S	507x2007x110 mm.	SLAVE- P3,91	6000 NIT	128X512 PX
G 200 000236	HFC-672X168-P2,97CW-M	2007x507x110 mm.	MASTER- P2,97	4500 NIT	672X168 PX
G 200 000237	HFC-672X168-P2,97CW-S	2007x507x110 mm.	SLAVE- P2,97	4500 NIT	672X168 PX
G 200 000234	HFC-512X128-P3,91CW-M	2007x507x110 mm.	MASTER- P3,91	6000 NIT	512X128 PX
G 200 000235	HFC-512X128-P3,91CW-S	2007x507x110 mm.	SLAVE- P3,91	6000 NIT	512X128 PX
G 200 000248	HFC-252X588-P2,97CW-M	757x1757x110 mm.	MASTER- P2,97	4500 NIT	252X588 PX
G 200 000249	HFC-252X588-P2,97CW-S	757x1757x110 mm.	SLAVE- P2,97	4500 NIT	252X588 PX
G 200 000253	HFC-192X448-P3,91CW-M	757x1757x110 mm.	MASTER- P3,91	6000 NIT	192X448 PX
G 200 000254	HFC-192X448-P3,91CW-S	757x1757x110 mm.	SLAVE- P3,91	6000 NIT	192X448 PX

Main Features

This range of digital signs includes five formats and two types of functionality: "Master" unit with autonomous operation and integrated video player; "Slave" unit with operation exclusively in combination with the Master unit. The graphic resolution can be determined by choosing between these available LED pitches: P2.97; P3.91. (distance between LEDs: 2.76 mm and 3.91 mm).

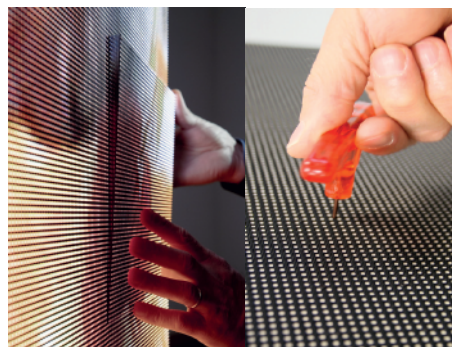


Available Formats



Excellent design

The exclusive cabinet design allows for exposed installation without the need for an additional casing.
The cabinet made of galvanized steel and painted with epoxy powders guarantees resistance to the worst environmental conditions and durability over time.



Front maintenance

All models of the DiLES series are equipped with front access for maintenance, this solution allows an easily inspection . The disassembly of the LED modules is performed by using a special tool supplied with the product that makes the operation extremely fast.



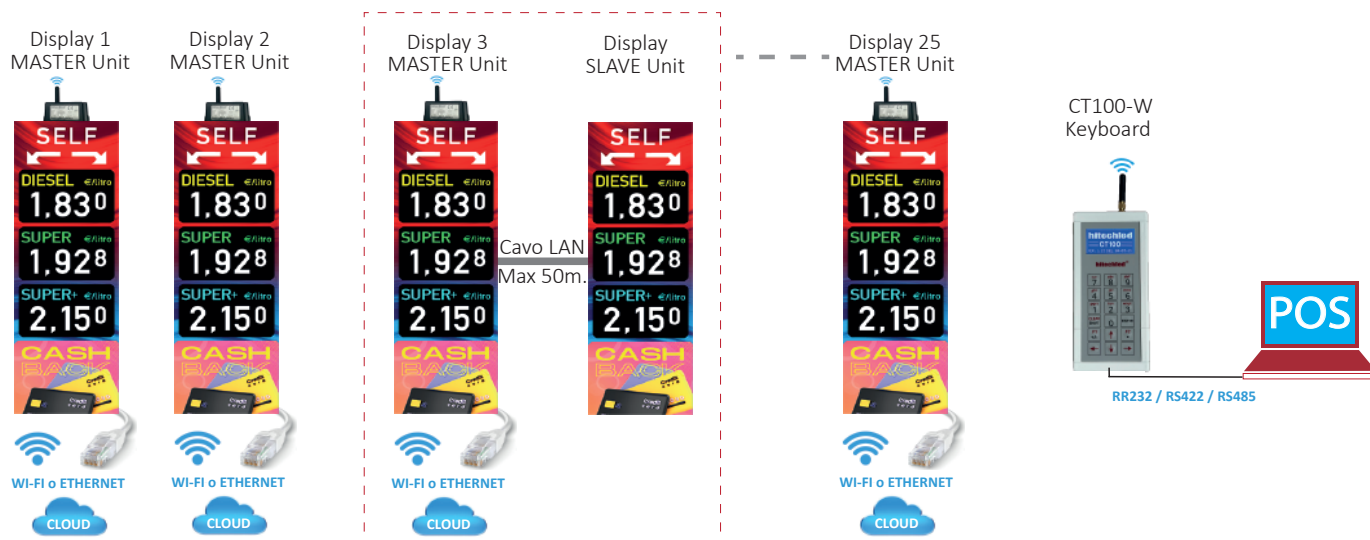
Programming by Cloud software

Programming multimedia content in DiLES digital Sign is simple and can be operated remotely via PC or Tablet. The innovative Cloud Software, designed within our research and development division, allows access to the reserved area where it is possible to modify content and set parameters such as video duration and image sequence. Hitechled Cloud software aims to provide the end customer with effective and personalized communication directly with full satisfaction of the final result. Available Languages: Italian, English.

APPLICATION ON FUEL STATION

A Master unit of the DiLES series can display fuel prices. To perform this function it must be equipped with adequate optional devices such as the HIT301 interface, which is an optional additional card that is mounted internally to the display and must be requested at the time of ordering. It is also necessary to add another optional device, which is the CT100 Keyboard (cable connection) or CT100-W Keyboard (wireless connection) with relative WT868-O receivers. From the device, which in turn must be connected to the POS for the acquisition of fuel prices, various communication protocols can be selected to make it compatible with the main management systems of petrol stations.

A CT100 or CT100-W Keyboard can manage up to 25 Master displays, the radio coverage in open field is approximately 80m.



MASTER OR MASTER + SLAVE

A Master unit display is an independent display that displays its own multimedia content, while the Slave unit display works synchronously with the Master display and can be configured **(Only by requesting it during production phase)** in 2 different modes:

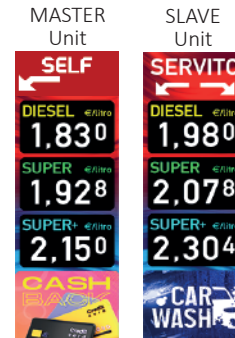
MODE 1- Repeats the same content as the Master display in real time.

MODE 2- It becomes an extension of the Master unit display by doubling the graphic resolution, so in the case of mode the prices in the Slave display can be different from the Master display and in the case of use as a digital sign it allows you to obtain highly effective scenographic effects.

MODE 1- repeats the content, in the example it is clear that the content is identical.

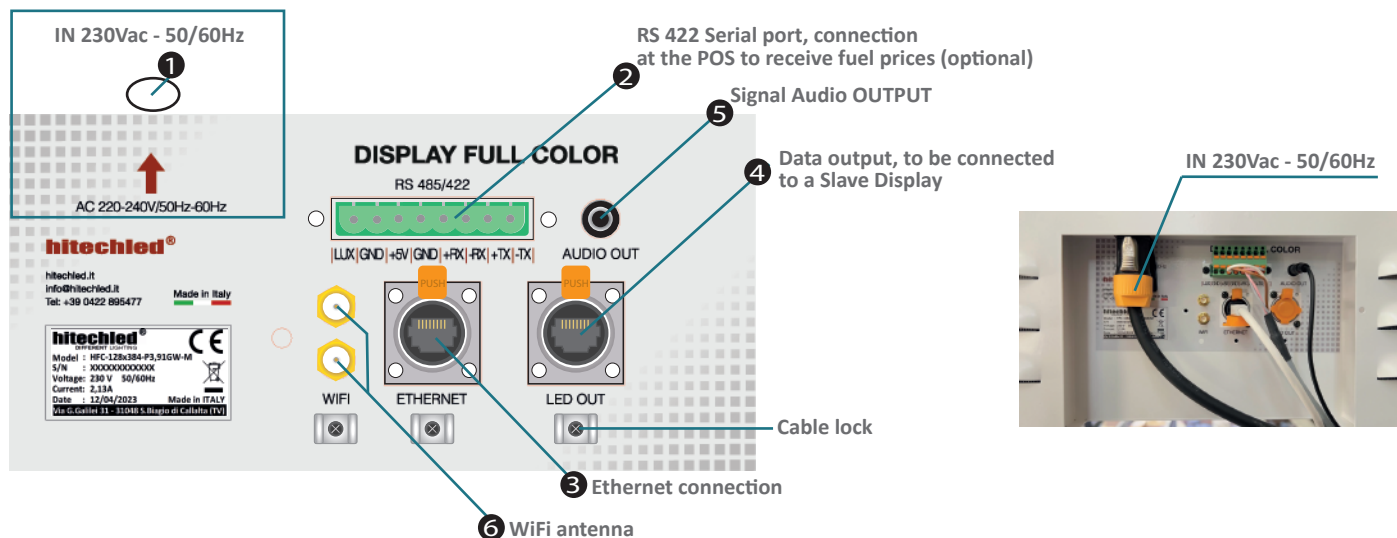


MODE 2- Dual resolution, the content of one display can be totally different from the content of the other display. **Recommended if arrows indicating directions are used.**



CONNECTION COMPARTMENT

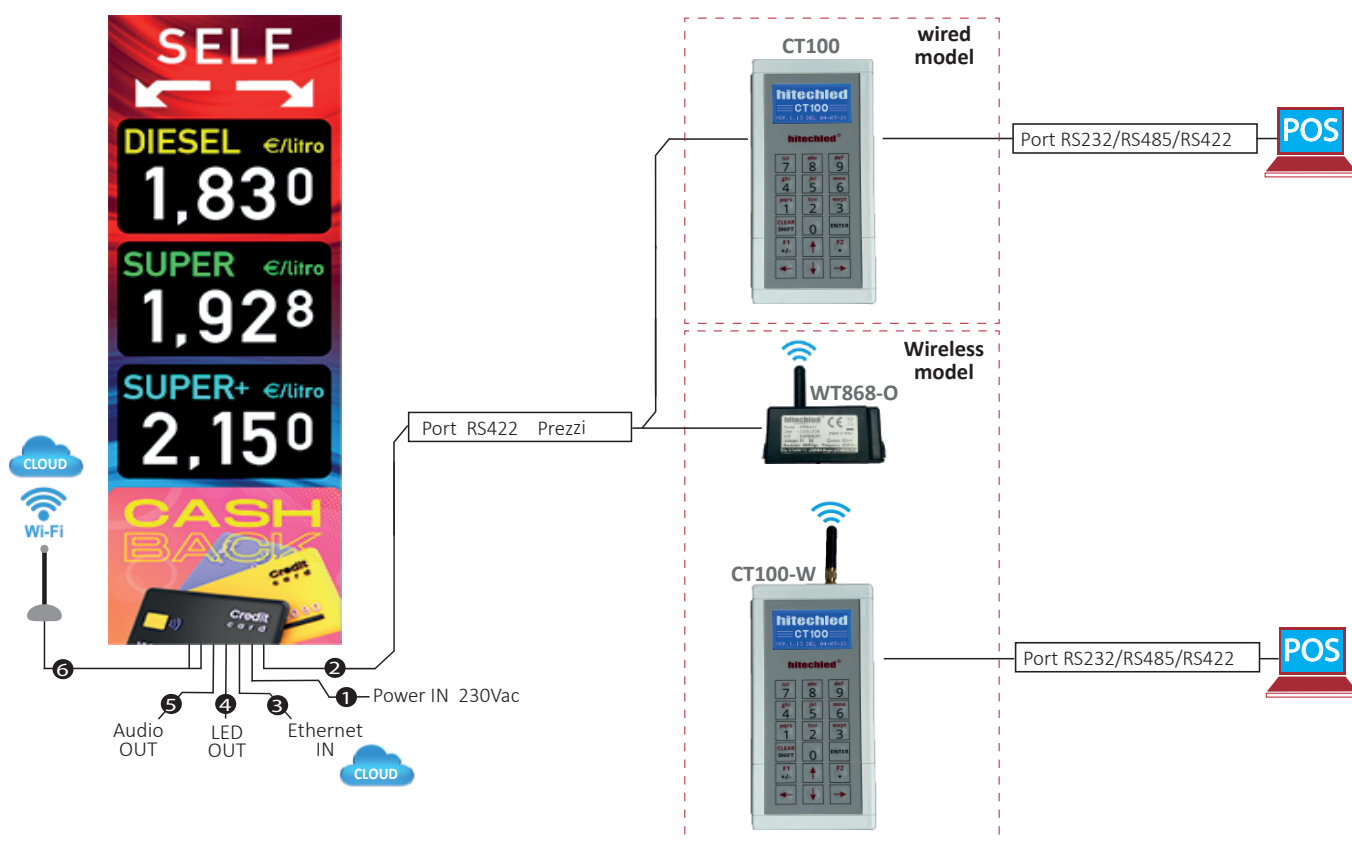
On the rear side of the cabinet there is the connection compartment, where the connectors are located.
Once the necessary connections have been made, close the compartment with the appropriate protective cover.



- ① Power IN 230Vac
- ② Connector for the RS422 serial port, to CT100 keyboard
- ③ RJ45 connector, ethernet
- ④ RJ45 connector LED signal output (to Slave display)
- ⑤ Audio signal output connector
- ⑥ WiFi antenna connectors

RS422 SERIAL PORT (OPTIONAL)

From this serial port the display acquires fuel prices in real time from the petrol station management system (POS), through the CT100 keyboard, or the CT100-W wireless version in combination with its WT868-O receiver.



MULTIMEDIA CONTENT PROGRAMMING

Multimedia content programming is performing by the Cloud software, which can be accessed from the HITECHLED website:

<https://www.hitechled.it/display-a-led/display-full-color/>

Access to the Cloud software **Visi@m®** is only possible after the registration of an account.

Furthermore, it is essential that at least one Master Unit display is connected to Internet, via the Ethernet network, using the appropriate connector in the display's connection compartment, or via WiFi with the addition of the external antenna (optional).

Hitechled

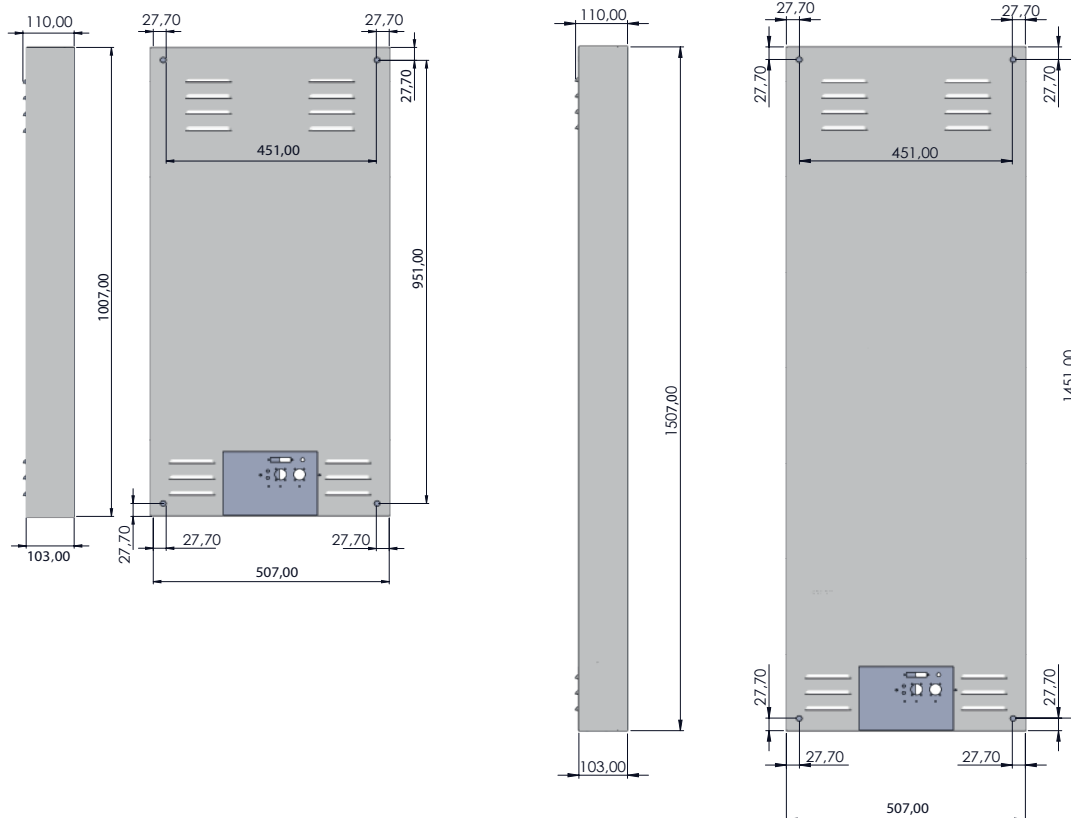
Recupera Password

Non sei ancora registrato? [Crea un Account](#)

DIMENSION

The dimensions shown below refer to the 2 main models of the DiLES series: 507x1507 and 507x1007, the other products of this series differ only in external dimensions, but for the positioning of the fixing holes with respect to the perimeter of the cabinet you can refer to the measurements shown in the drawings below.

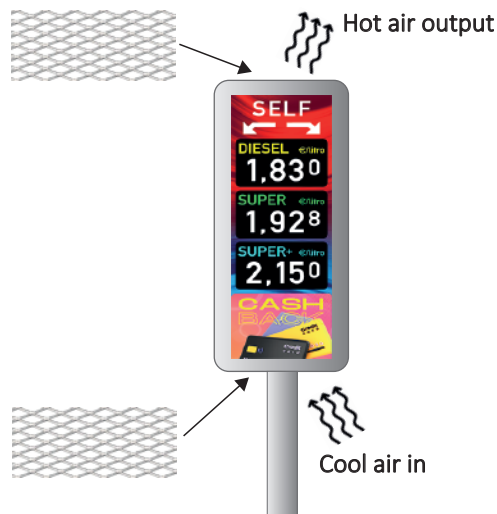
The available formats of the DiLES series are shown on page 3.



INTEGRATED APPLICATION

The device's ventilation vents are located on the back of the LED display and it is important to follow the installation instructions, especially if the display is to be integrated on a casing.

- ⚠ Maintain a gap of at least 5 cm between the display and the mounting wall to allow forced air to circulate.
- ⚠ If the display is integrated into a structure, it is necessary to provide abundant ventilation grilles at the bottom and top of the casing to trigger the chimney effect, thus avoiding the stagnation of hot air expelled by the device's fans. The ideal would be to use a metal grille. If the overall aesthetics allow it, it is also possible to use the grille along the vertical wall of the casing.



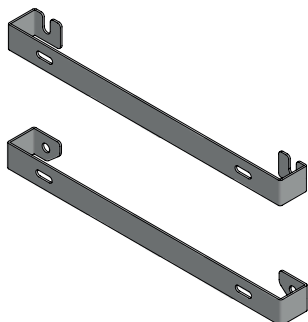
CABINET FIXING

On the back side of cabinet, there are 4 M10 threaded holes for fixing.

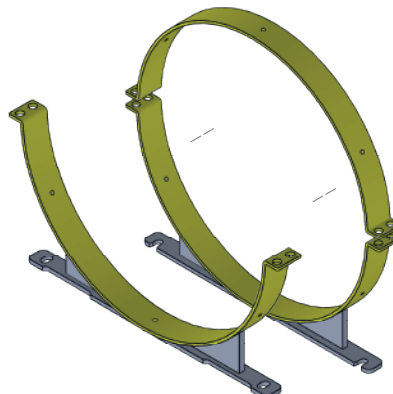
Optional brackets are available only for models with a 507 mm base to a 500 mm diameter column mounting and to the wall mounting.



WALL MOUNTING BRACKETS



ROUND PYLON MOUNTING BRACKETS (500 mm)

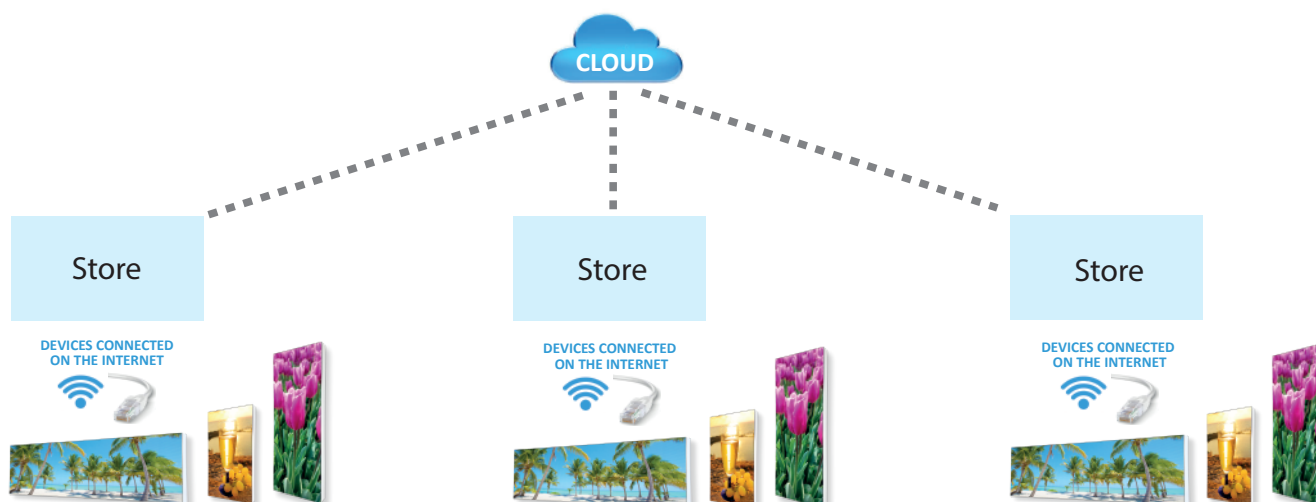


CLOUD

This cloud platform is not just a simple software for programming digital advertising, but is designed to allow a structured management of visual communication that can be composed as a single device or as a network of devices capable of making digital communication dynamic through screens of various sizes located in the city or on a larger territory, DOOH (Digital Out Of Home), thanks to this technology it is possible to transmit advertising messages simultaneously.

CLOUD STRUCTURE

- **Company** - is the owner of the account.
- **User**- is the person who manages Stores, Devices and Programs. A company can nominate more than one user.
- **Store**- it is a place in which one or more devices are installed, such as for example a shopping centre, a fuel station, the street or square
- **Device**- it is the LED display, or more precisely it is the LED display in which the player resides (Master Display).
- **Program**- it is the schedule, or the succession of pages of multimedia content called "slides".



TECHNICAL PARAMETERS

Features

Resolution, pitch (distance between pixels):	Pitch 2,97 mm	Pitch 3,91 mm
Supply voltage	DC 230 Vac 50/60 Hz	DC 230 Vac 50/60 Hz
Consumption (all white)	700 W /mq	700 W /mq
Average consumption	180 W /mq	180 W /mq
LEDs per pixel	1	1
LED type	SMD- 1415	SMD- 1921
Luminance	4500 NIT (cd/mq)	6000 NIT (cd/mq)
Color levels	16.000.000	16.000.000
Refresh rate	1920 Hz	1920 Hz
Visibility angle	120°	120°
Operating temperatures	-20 C° ~ +55 C°	-20 C° ~ +55 C°
Storage temperature	+5 C°~ +40 C°	+5 C°~ +40 C°
Relative storage humidity	RH < 60%	RH < 60%
Protection level	IP 54 (outdoor)	IP 54 (outdoor)
Estimated life of LEDs	80.000h	80.000h
Insertion of Video, Image, Gif content	Included	Included
Insertion of fixed and scrolling text	Included	Included
Automatic and programmable screen brightness adjustment from Cloud	Included	Included
Cabinet in galvanized and powder-coated steel	Included	Included
Regional/National average price function	Included	Included
Insertion of placeholders (product price display fields)	Included	Included
Regional/National average price display, automatic update	Included	Included
Small character superscript/subscript function (thousandth of fuel prices)	Included	Included
Automatic display of local fuel prices in real time (from POS)	Optional	Optional

Warranty conditions:



hitechled.it



HITECHLED S.r.l.

Via G. Galilei, 31 - S. Biagio di Callalta (TV) ITALY
Phone: +39 0422 895477 | info@hitechled.it