

### PROFILO 1840

| Model          | Color | CCT / λd    | Luminous Flux |
|----------------|-------|-------------|---------------|
| HP8E-40W24-15M | White | 6000-6500 k | 1000Lm./m.    |

### PROFILO 1860

| Model          | Color | CCT / λd    | Luminous Flux |
|----------------|-------|-------------|---------------|
| HP5E-60W24-15M | White | 6000-6500 k | 600Lm./m.     |

### Generic Features

|   |                 |
|---|-----------------|
| Module Operating Voltage                          | DC 24V          |
| Length  | 15.000 mm.      |
| LED quantity (1840)                               | 40 LED/m.       |
| LED quantity (1860)                               | 60 LED/m.       |
| IP Class  | IP67            |
| Operating Temperature Range                       | -30 C° ~ +50 C° |
| Storage Temperature Range                         | -30 C° ~ +60 C° |
| Storage Environment Humidity                      | RH < 60%        |
| Cable length                                      | 250 mm.         |
| Viewing Angle                                     | 120°            |
| Life Time (temperature at T <sub>c</sub> = 75 °C) | 50.000h ( L70 ) |
| Consistent white light                            | < 3 SDCM        |
| N. LED Profile per pack                           | 1               |
| Warranty  | 3 Years *       |

\*See terms and conditions



The 1840 and 1860 profiles are designed for linear backlighting applications, for example the 1840 model with 40 leds / m., high brightness to illuminate the fascias of the gas station canopies, while the 1860 model with 60 leds / m. with less brightness but more LEDs quantity to light homogeneously the perimeter of the roofs.

The innovative zip fastening system makes it unique in its kind because it makes installation very quick.

The shape and size of product make it very robust and reliable.

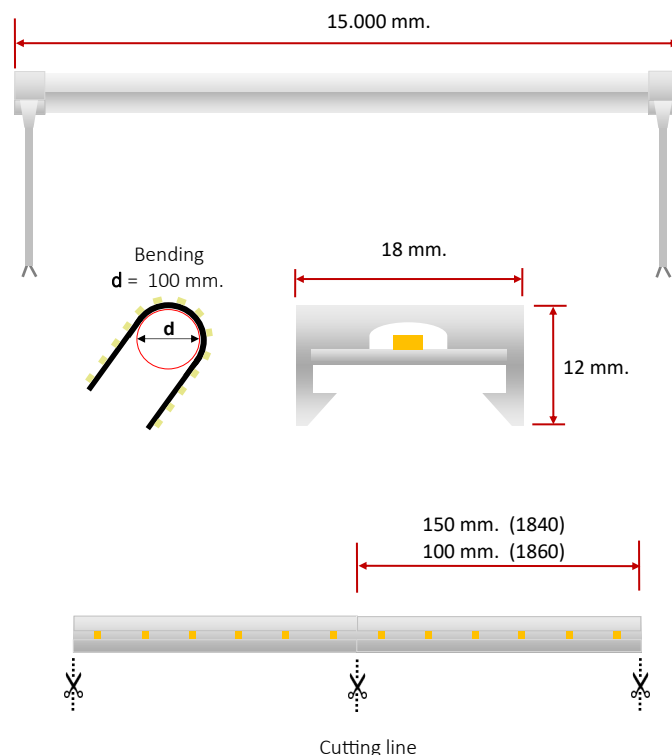
It can be cut and terminated with special opal caps that become luminous avoiding light interruptions.

### Applications

- Linear lighting
- Edging of canopies
- Architectural and decorative application
- Permanent use into aluminium profiles

### Benefits

- Linear backlighting, homogeneous brightness
- Excellent luminous efficiency
- Flexible silicone structure
- Zip fixing system **EASY-ON**
- Opal silicone caps that spread the light
- Long life
- Constant Current driving
- Anti-yellowing silicone
- Power supply on one side for 15m profile



## Electrical Data

| Model          | Nominal Voltage | Voltage Range | Accidental reverse input voltage protection up to | Nominal wattage per LED profile |
|----------------|-----------------|---------------|---|---------------------------------|
| HP8E-40W24-15M | 24 VDC          | 23...25 VDC   | 25 VDC  | 120 W                           |
| HP5E-60W24-15M | 24 VDC          | 23...25 VDC   | 25 VDC  | 75 W                            |

## Photometrical Data

| Model          | Color | Color Temperature | Color Rendering Index | Typical Luminous Flux | Typical Luminous Efficiency |
|----------------|-------|-------------------|-----------------------|-----------------------|-----------------------------|
| HP8E-40W24-15M | White | 6500/7000K        | > 80                  | 1000 Lm./m.           | 125 Lm/W                    |
| HP5E-60W24-15M | White | 6500/7000K        | > 80                  | 600 Lm./m.            | 120 Lm/W                    |

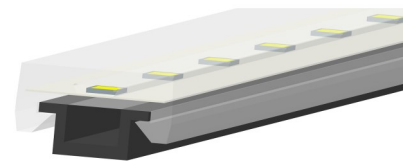
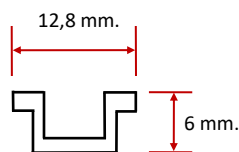
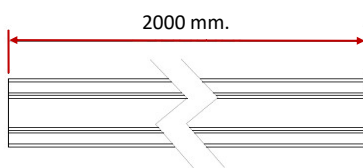
## Coding

| Model          | Code       |
|----------------|------------|
| HP8E-40W24-15M | HTL 000702 |
| HP5E-60W24-15M | HTL 000703 |
| HP-1800-2      | HTL 000704 |

## Fixing

- Fixing aluminium guide HP-1800-2 to the wall or ceiling with self-drilling screws, acting from inside the profile (Screws are not included).
- Zipping the silicone profile to the aluminium guide by pressing gently with the palm of the hand.
- Length of aluminium guide is 2 meters to facilitate transport.
- The hollow part also allows positioning of the power wires.
- Ease and speed of assembly of the silicone profile which is simply fixed by zip-fastening.

## Aluminium Guide HP-1800-2



## The product comply with the following European Standard

|                                     |                         |   |
|-------------------------------------|-------------------------|---|
| <input checked="" type="checkbox"/> | EN 62471: 2008          | Photobiological safety of lamps and lamp systems                                      |
| <input checked="" type="checkbox"/> | EN 62031: 2008+A1: 2013 | LED modules for general lighting, Safety specifications                               |
| <input checked="" type="checkbox"/> | RoHS2 2011/65/UE        | Restriction in the use of hazardous substances in electrical and electronic equipment |